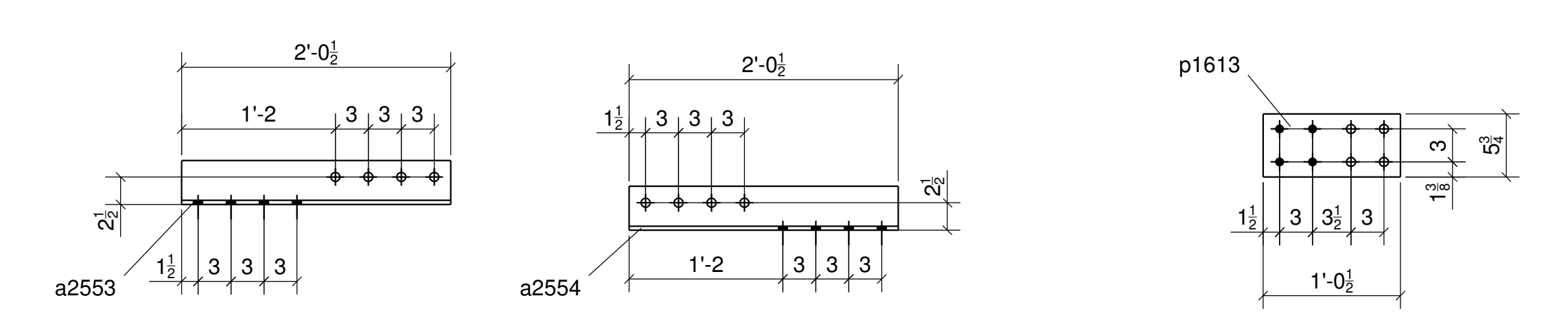
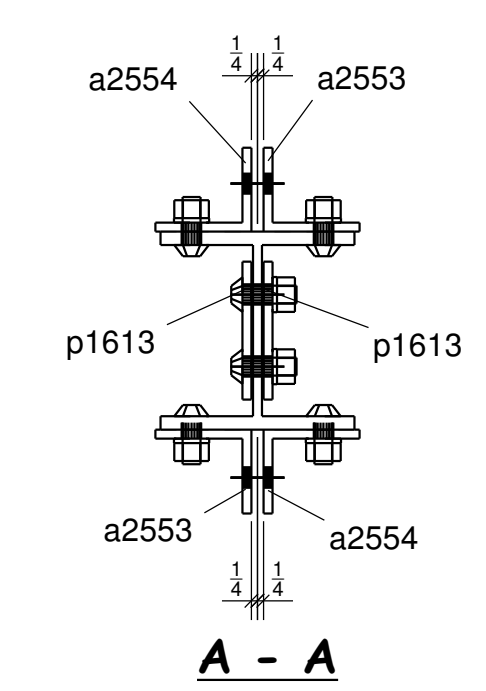
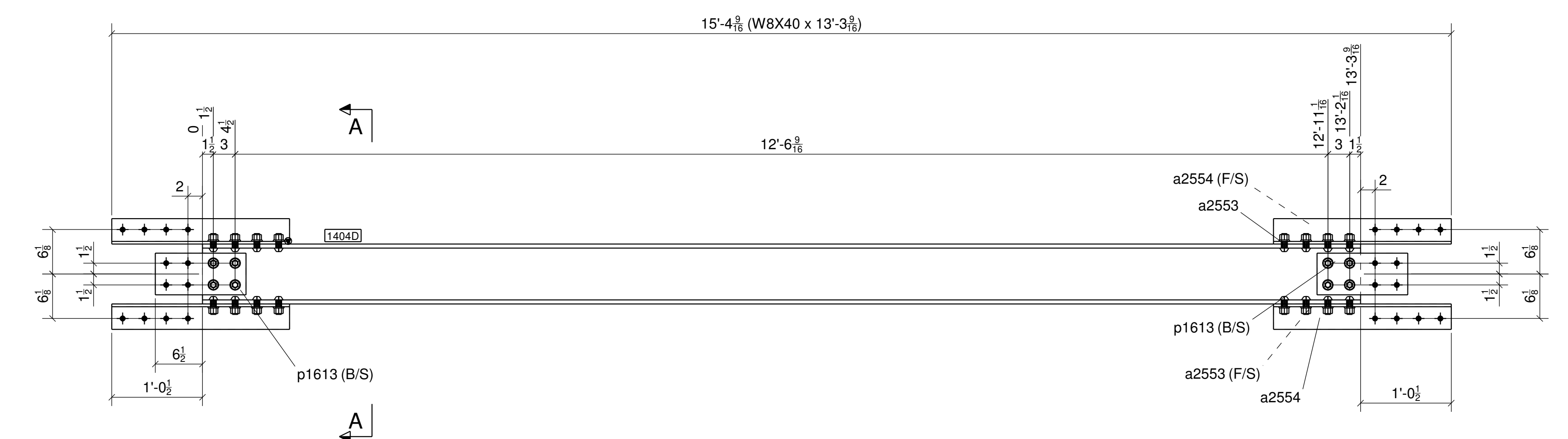
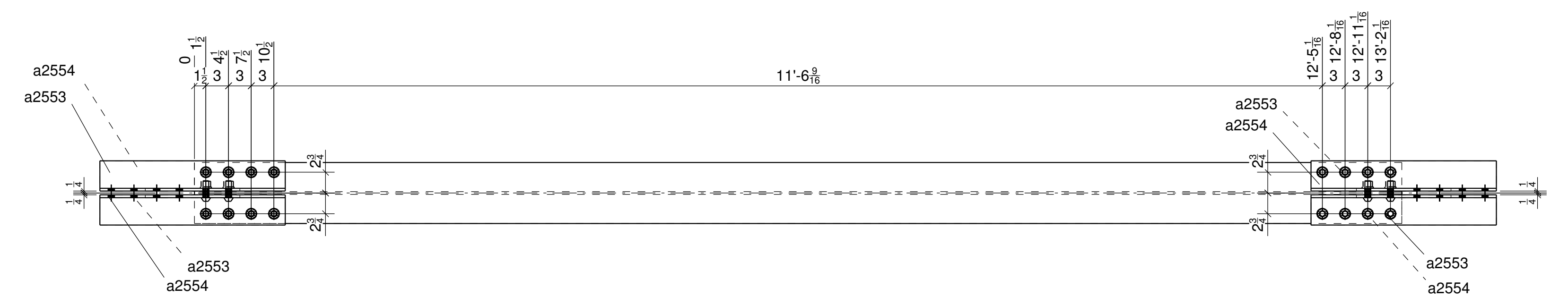


WBX40	
d	8 1/4"
tw	3/8"
bf	8 1/16"
tf	9/16"



SHIP	GRID LOC.	ELEV.	REF.	I.D. No.
1	5/A-B	92'-3"		3383446

SHOP NOTES:
 * - THE SIDE TO BE STRIPED
 * - ALL CORNERS TO BE RADIUS'D
 * - BOLT HEAD SHOWN ARE FOR INDICATIVE PURPOSE



1 - BRACE - 1404D

TOTAL QTY	UNIT QTY	MARK	DESCRIPTION	LENGTH	UNIT WT.	REMARKS	PG/LN
1		1404D	BRACE				
1	1	1404D	W8X40	13'-3 9/16"	530	A992	
4	4	a2553	L4X3-1/2X3/8	2'-0 1/2"	74	A36	
4	4	a2554	L4X3-1/2X3/8	2'-0 1/2"	74	A36	
4	4	p1613	PL3/8X5 3/4	1'-0 1/2"	31	A36	
32	32	BOLT	3/4" DIA A325SC_TC	2"			
8	8	BOLT	3/4" DIA A325SC_TC	2 1/4"			

UNIT QTY	FIELD BOLTS	LENGTH
24	3/4" DIA A325SC_TC	BOLT 2 1/4"

REV	DATE	REMARKS
0	09/07/07	ISSUED FOR APPROVAL
PJ	08/31/2007	RS 09/07/07

PROJECT			
THE ANNENBERG PUBLIC POLICY CENTER			
HOLES	SHOP BOLTS	ELECTRODES	ALL MAT'L TO
13/16Ø	3/4Ø A325N TC.	E70XX (LH)	BE ASTM A36 (UN)
SHOP PAINT		SURFACE PREP.	
SSPC-SP6		DRY MIL	
DRW BY		CHKD BY	DATE
PJ		RS	09/07/07
CONTRACT NO.		SHT NO.	
2018		1404D	