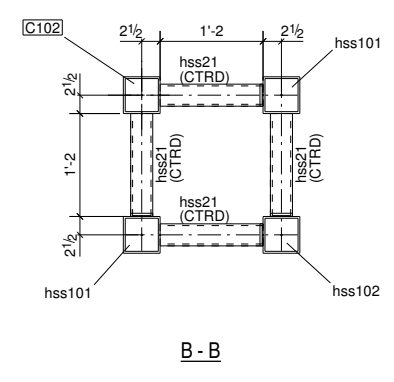
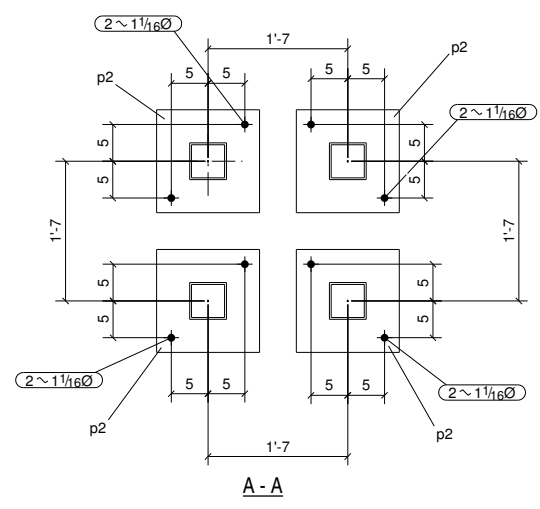
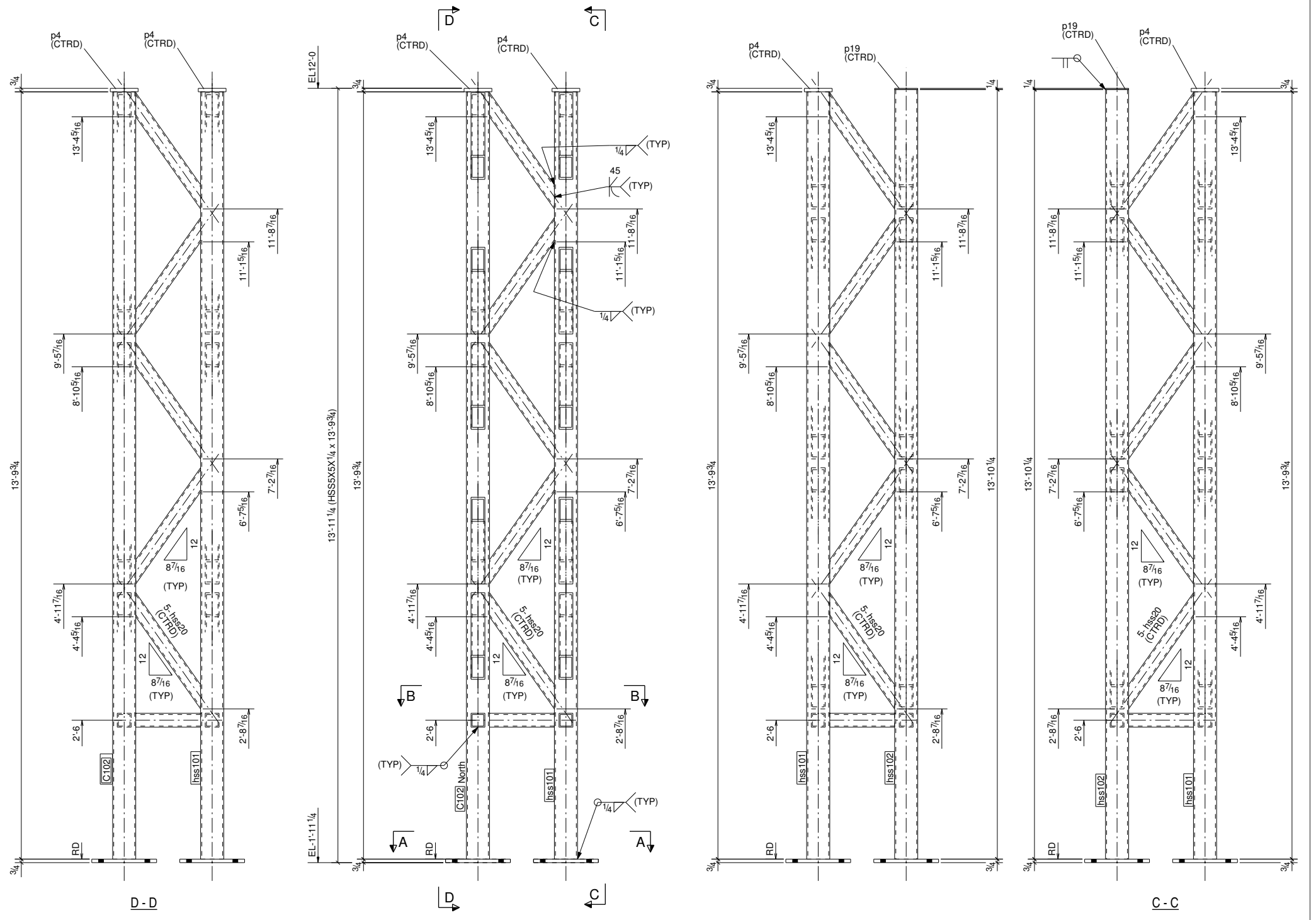


SHIP	GRID LOC.	ELEV.	REF.	I.D. No.
1	7/C	11'-11 1/4"	05/09/07	317254

01/08/2008
11:25:08

BILL OF MATERIAL						
MARK	QTY.	DESCRIPTION	LENGTH	REMARKS	UNIT WT	WEIGHT
C102	1	HSS5X5X1/4	13'-9 3/4"		202.1	202.1
hss20	20	HSS3X3X1/4	2'-4 9/16"		19.8	395.7
hss21	4	HSS3X3X1/4	1'-2"		9.7	38.8
hss101	2	HSS5X5X1/4	13'-9 3/4"		202.1	404.2
hss102	1	HSS5X5X1/4	13'-10 1/4"		202.7	202.7
p2	4	PL3/4X14	1'-2"		41.8	167.2
p4	3	PL3/4X6	0'-6"	PLAIN MATL.	7.7	23
p19	1	PL14X5	0'-5"	PLAIN MATL.	1.8	1.8
						1425.5



MATERIALS:
STEEL ANGLES, PLATE & CHANNELS = ASTM A36
HSS = ASTM A500 GR.B, STEEL PIPE = ASTM A53 GR.B
HIGH-STRENGTH BOLTS = A325X

FIELD BOLTS			
PAINT			
MATERIAL	A36		
Holes: 13/16" U.N.O.	07/03/07	ISSUED FOR SHOP	
ELECTRODES: E70XX	05/09/07	ISSUED FOR APPROVAL	
TOTAL WEIGHT:	NO	DATE	DESCRIPTION
			REVISIONS

ONE COLUMN C102

JOB NAME:	TYSENGER HYUNDAI	DRAWN BY:	NCS	CHECKED BY:	MMM
LOCATION:	HAMTON, VIRGINIA	SCALE:		DATE:	05/09/2007
CONTRACTOR:	COMMON WEALTH CONSTRUCTION CO., INC.	JOB NUMBER:		SHEET:	
DESCRIPTION:	COLUMN DETAILS	628		C102	