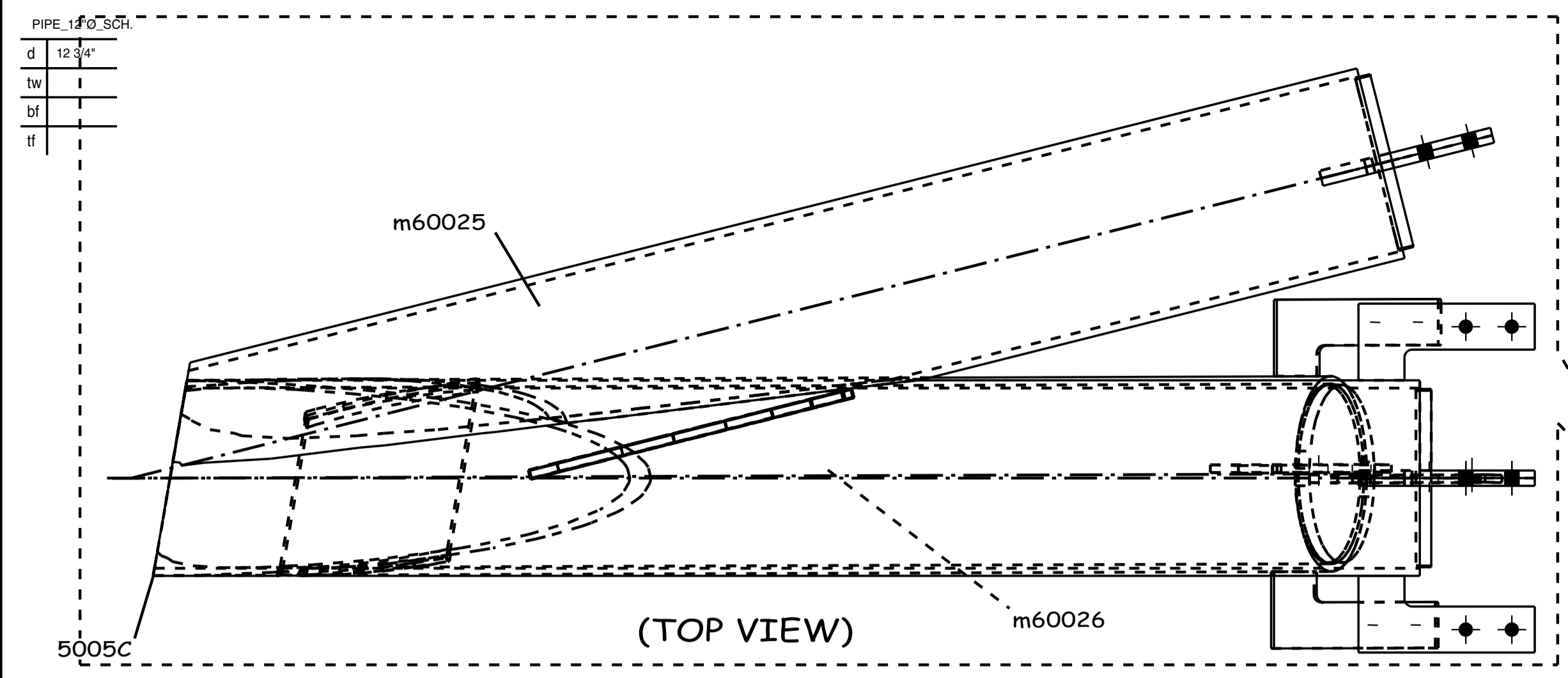
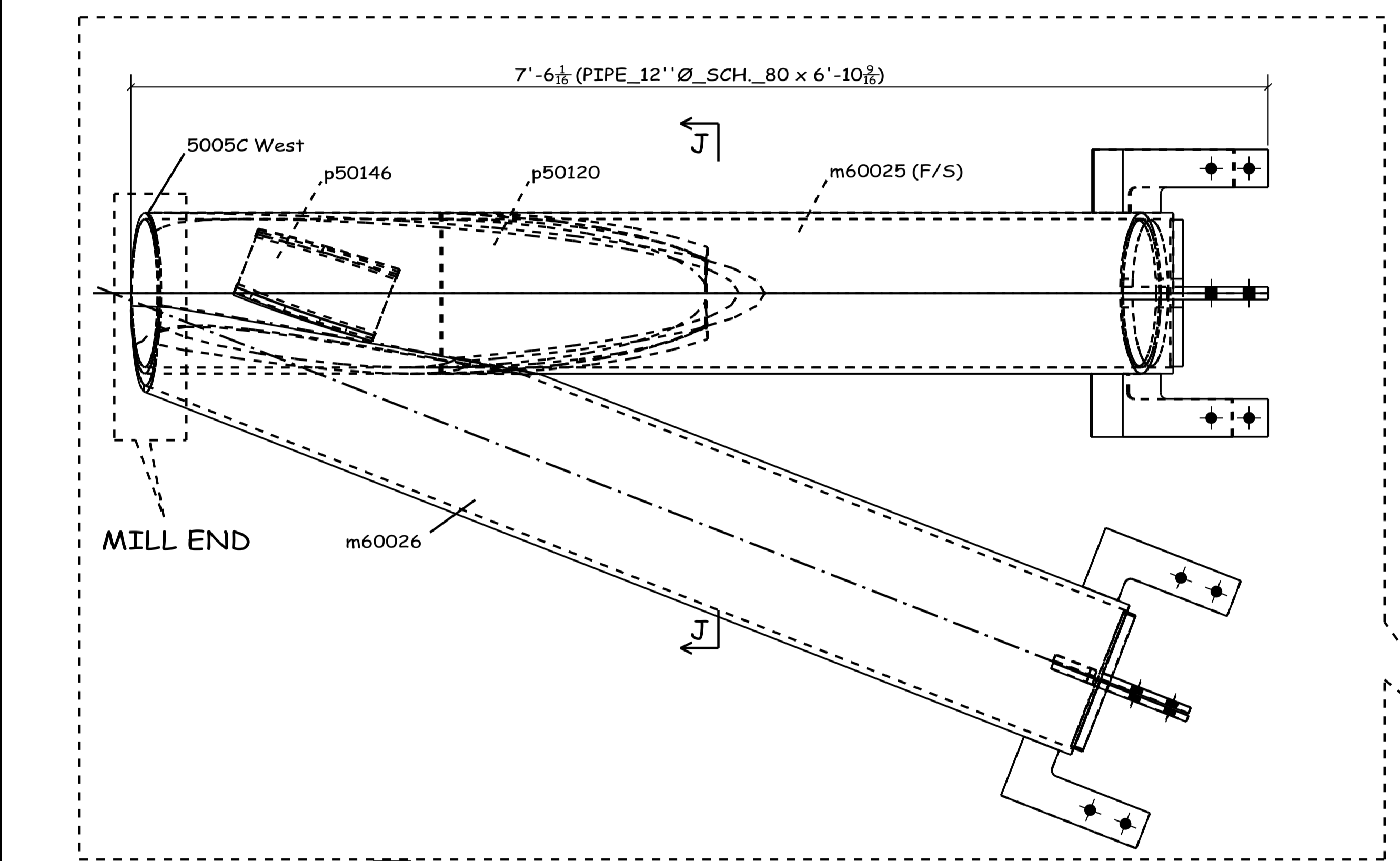


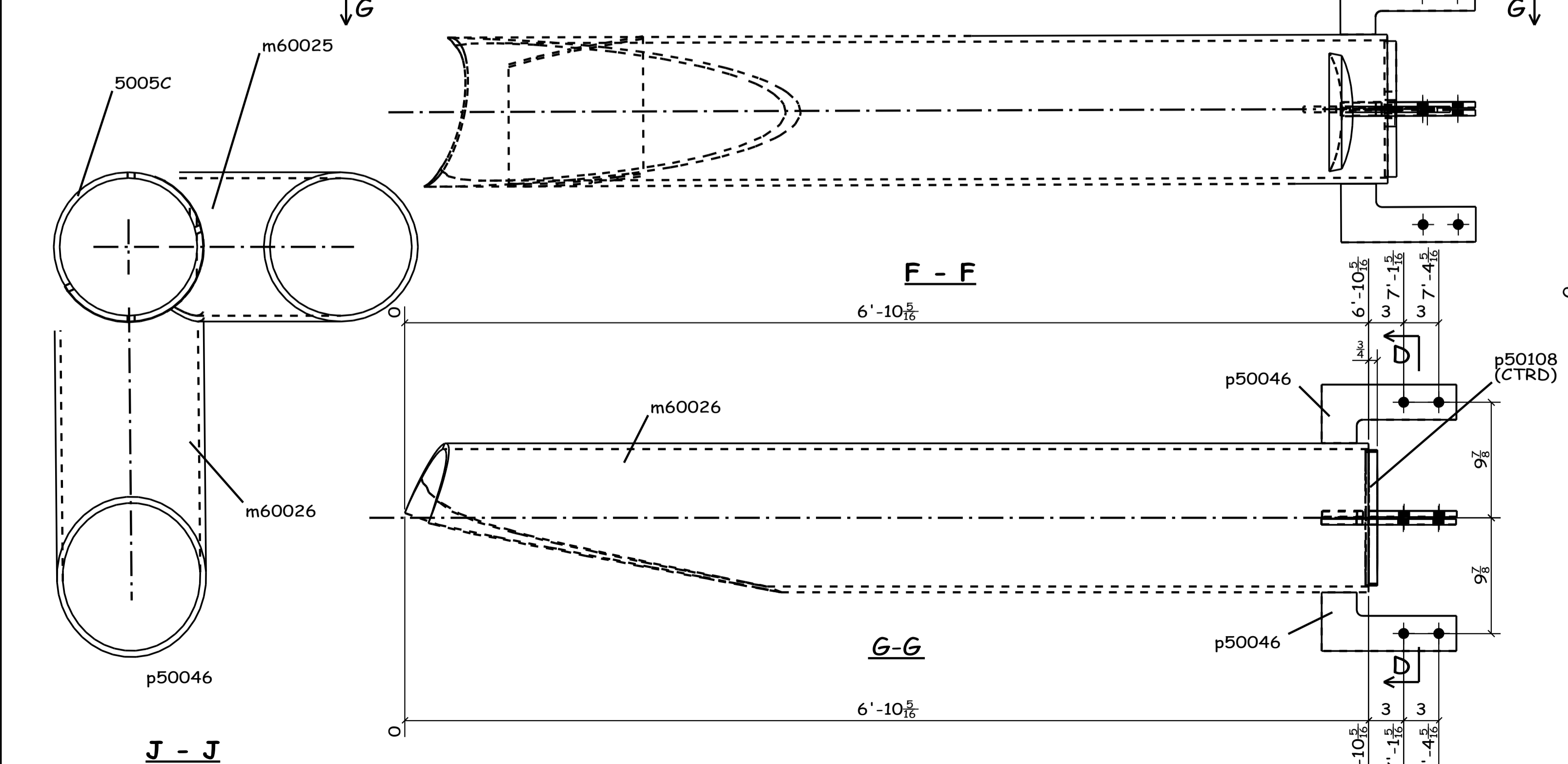
d	12.34'
tw	
bf	
tf	



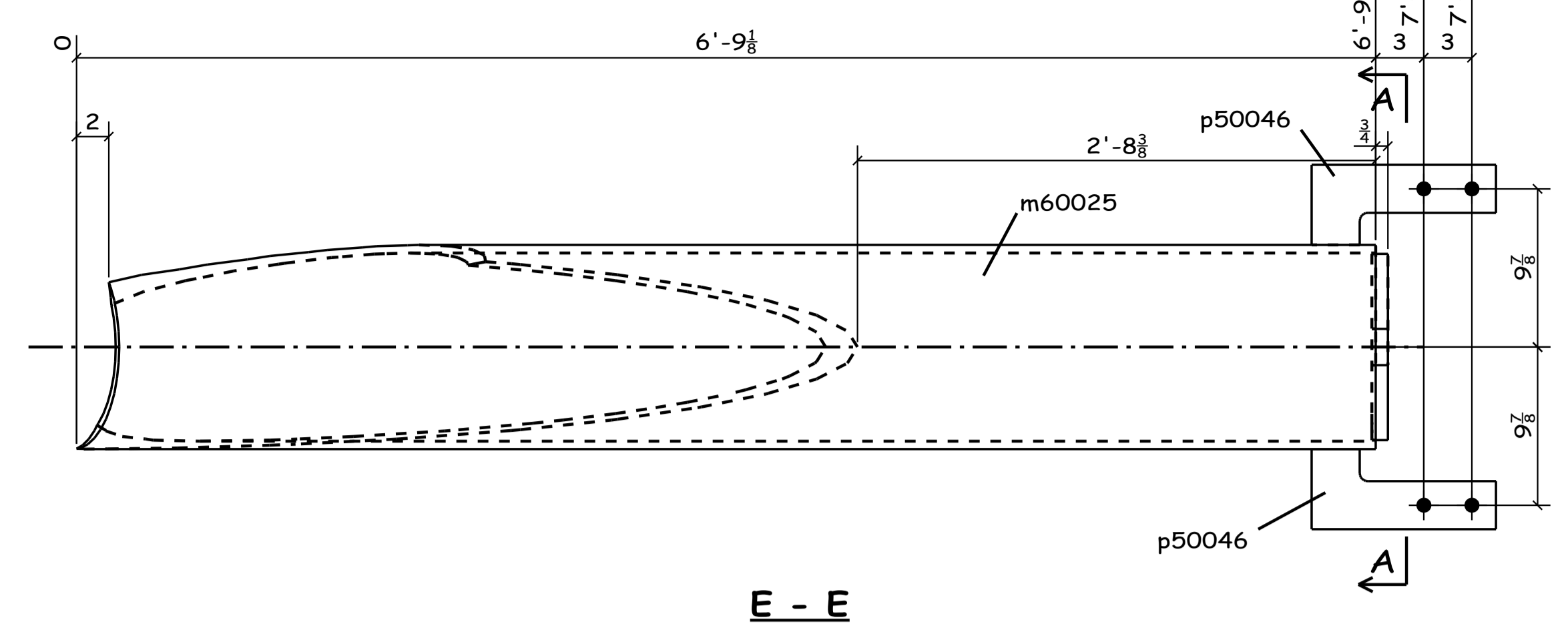
DET-1



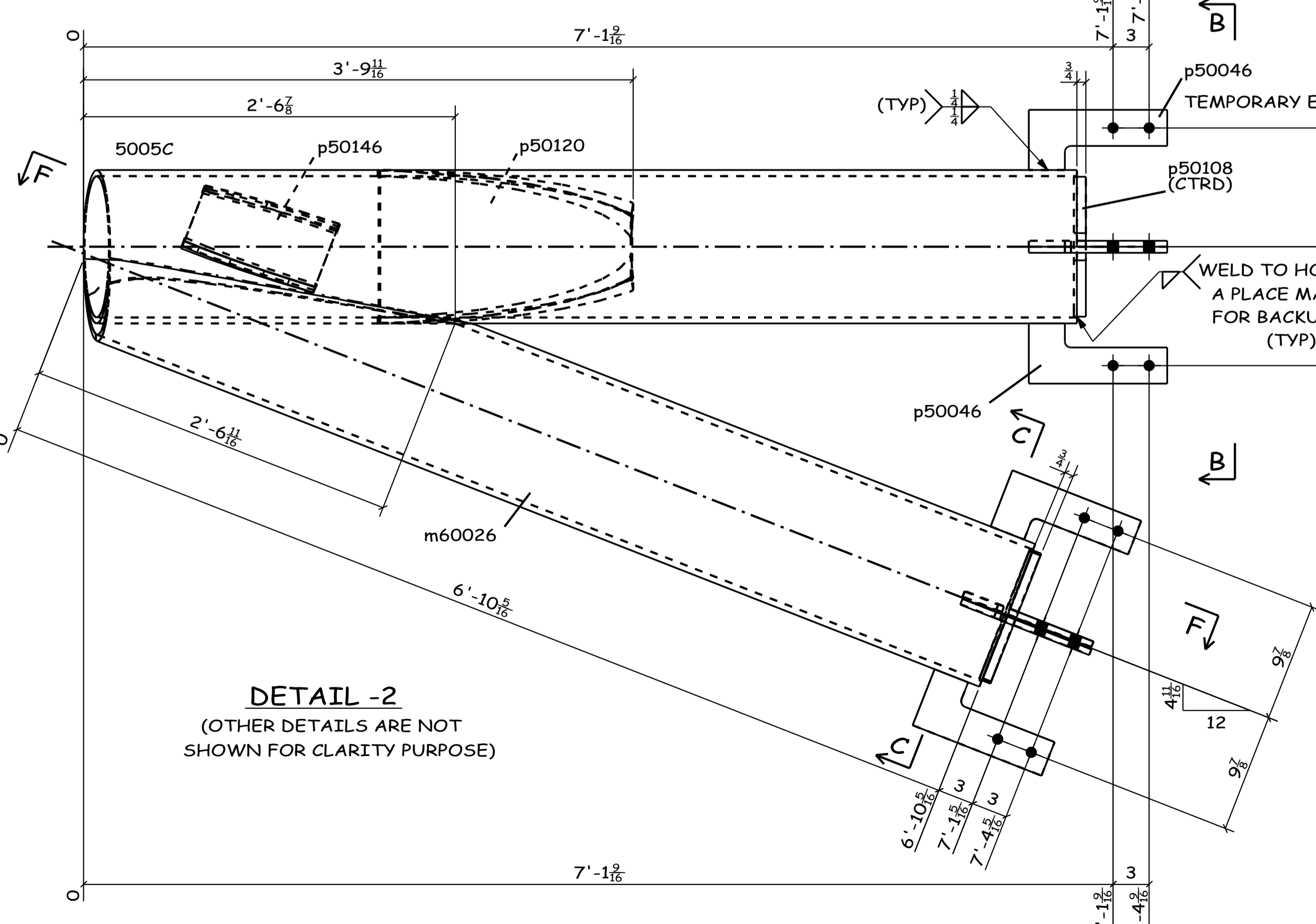
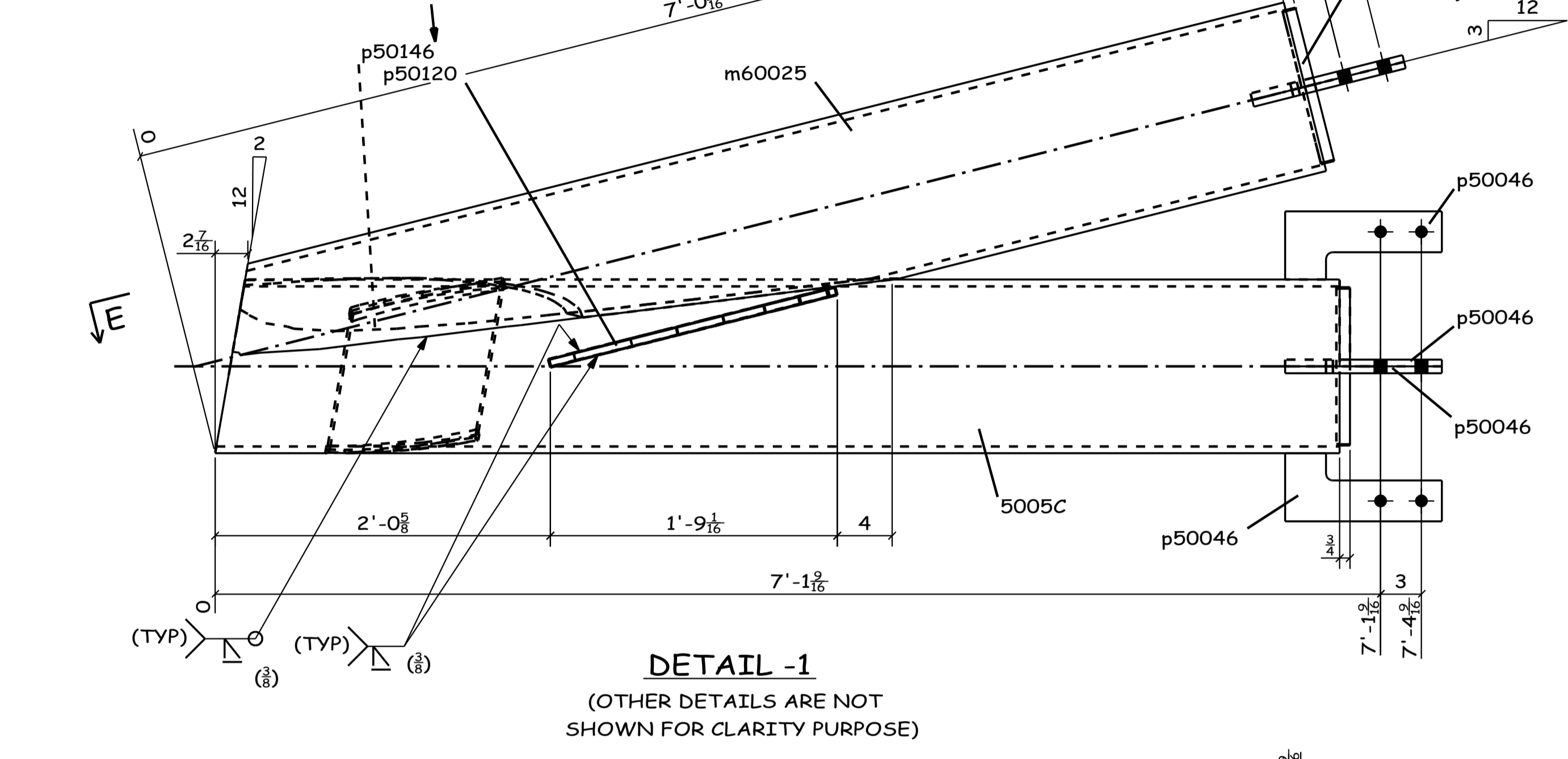
DET-2



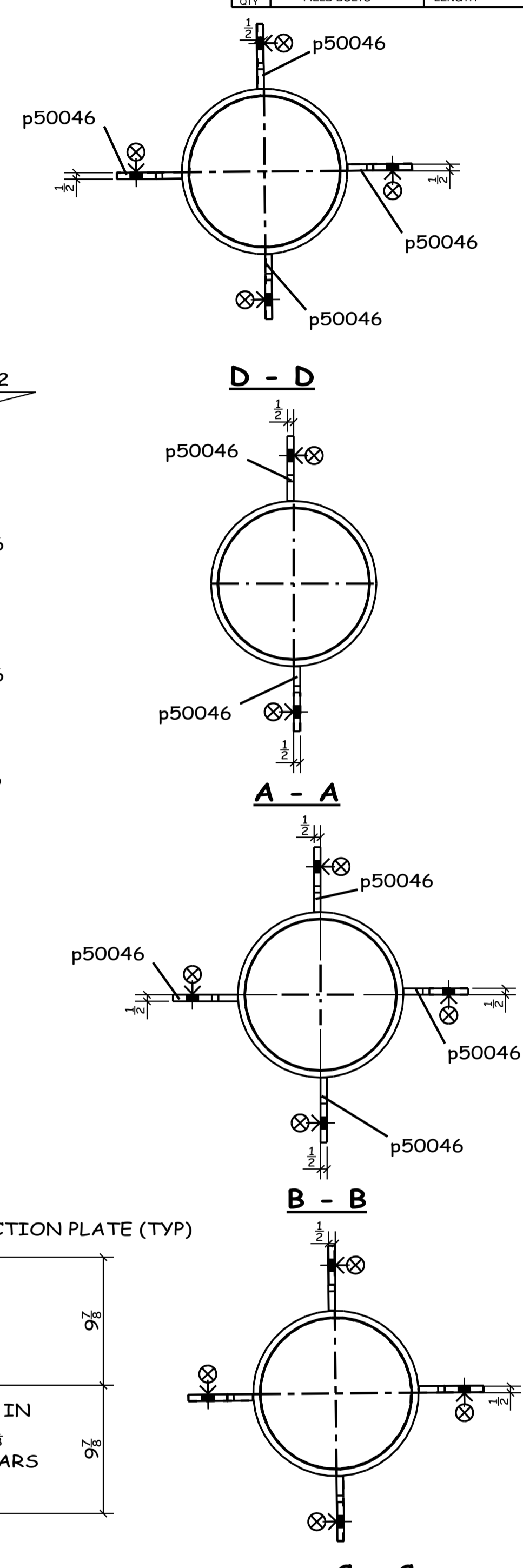
1 - COLUMN - 5005C



MATCH INTERNAL STIFF. PLATES in 5005C  
FIX THE PLATE INLINE WITH m60025 & m60026  
PROVIDE 1/8" SLOT IN 5005C

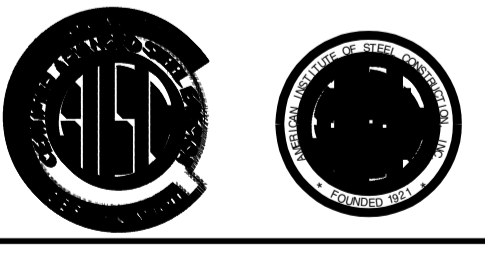


TOTAL QTY	UNIT QTY	MARK	DESCRIPTION	LENGTH	UNIT WT.	REMARKS	PGLN
1		5005C	COLUMN				
1	1	5005C	PIPE 12" O. SCH. 80	6'-10 9/16"	450	A500-GR.B F.2E.	
1	1	m60025	PIPE 12" O. SCH. 80	6'-9 1/8"	442	A500-GR.B F.2E.	
1	1	m60026	PIPE 12" O. SCH. 80	6'-10 5/16"	448	A500-GR.B F.2E.	
10	10	p50046	PL1/2X5	0'-11 1/2"	82		
3	3	p50108	PL1 X11 5/8	0'-11 5/8"	115		
1	1	p50120	PL1/2X13 3/4	1'-9 5/8"	32		
1	1	p50146	PL1/2X11 1/2	1'-2"	20		



SHIP	GRID LOC.	ELEV.	REF.	I.D. No.
300	10.3-10.4A.B.1	166-11'7.8		9946165

SHOP NOTES:  
X = THE SIDE TO BE STRIPED  
\* ALL COPES TO BE RADIUSUED \*



SHOP BOLTS A325N_TC	HOLES (U.N.) 15/16Ø	ALL MATERIAL TO BE ASTM A-36 (U.N.)
SHOP PAINT Tnemec 90-97	SURF. PREP SSPC-SP6	DRY FIL THK
ALL WELDS TO BE MADE WITH ELECTRODE SERIES E70XX (LH)		
PROJECT UNIVERSITY OF MASSACHUSETTS AMHERST. MA. CENTRAL HEATING PLANT-MAIN BUILDING		
DRAWN BY: RP	DATE: 09/07/2006	CHECKED BY: SJ
CONTRACT NO. 1890		SHEET NO. 5005C

REV	DATE	REMARKS
1	10.18.06	GENERAL REVISION SJ