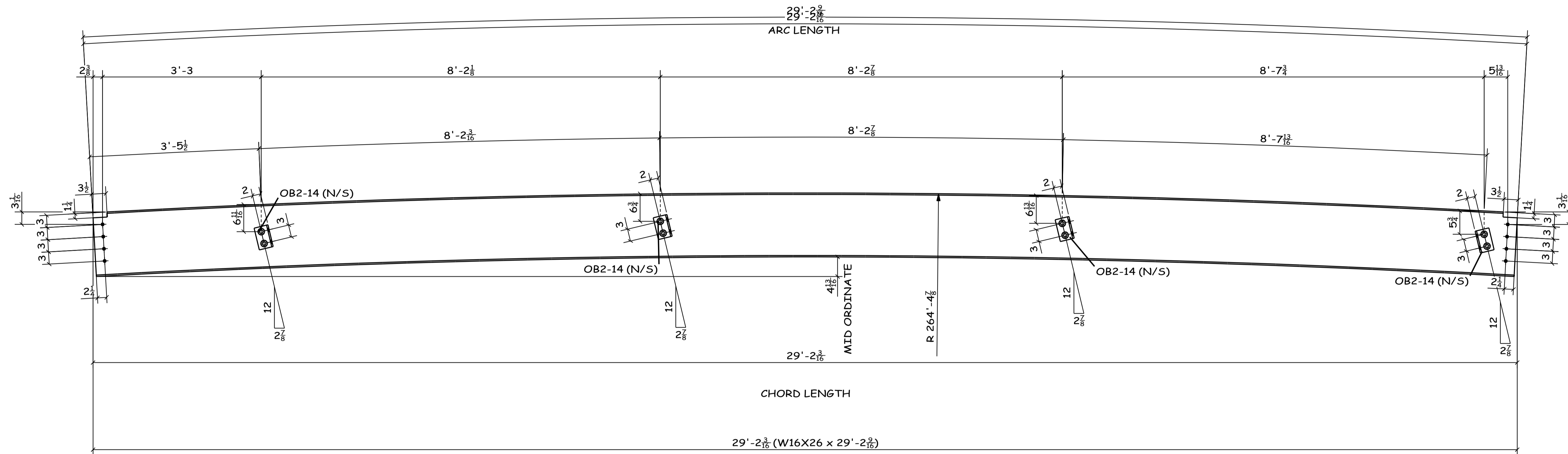


06/16/2006
10:22:08
W16X26
d 20 1/2"
tw 1 1/4"
bf 5 1/2"
tf 3/8"



FABRICATOR NOTES:-
ADD (+3'-0" FOR ROLLING) ALLOWANCE WITH THE GIVEN CUT LENGTH.

1 - BEAM - 3147B

TOTAL QTY.	UNIT QTY.	MARK	DESCRIPTION	LENGTH	UNIT WT.	REMARKS	PGLN
1	1	3147B	BEAM	29'-2 9/16"	764	A992 ROLLED	
4	4	OB2-14	L4X3-1/2X3/8	0'-5 1/2"	17		
8	8	BOLT	7/8" DIA A490N TC	2"			

SHIP	GRID LOC.	ELEV.	REF.	I.D. No.
30	8.7-A/A.6-T2.2	209.9'±15/16		1847358

SHOP NOTES:
X = THE SIDE TO BE STRIPED
* ALL COPES TO BE RADIUSUED *

PROJECT
UNIVERSITY OF MASSACHUSETTS AMHERST, MA CENTRAL HEATING PLANT-MAIN BUILDING

HOLES	SHOP BOLTS	ELECTRODES	ALL MATL TO BE ASTM A36 (UN)
15/16O	A325N_TC	E70XX (LH)	

UNIT QTY.	FIELD BOLTS	LENGTH
8	7/8" DIA A490N TC	BOLT 2"

REV	DATE	GENERAL REVISION	DATE	CHKD BY	DATE	CONTRACT NO.	SHIT NO.
1	06.16.06	GENERAL REVISION	SJ			1890	3147B

