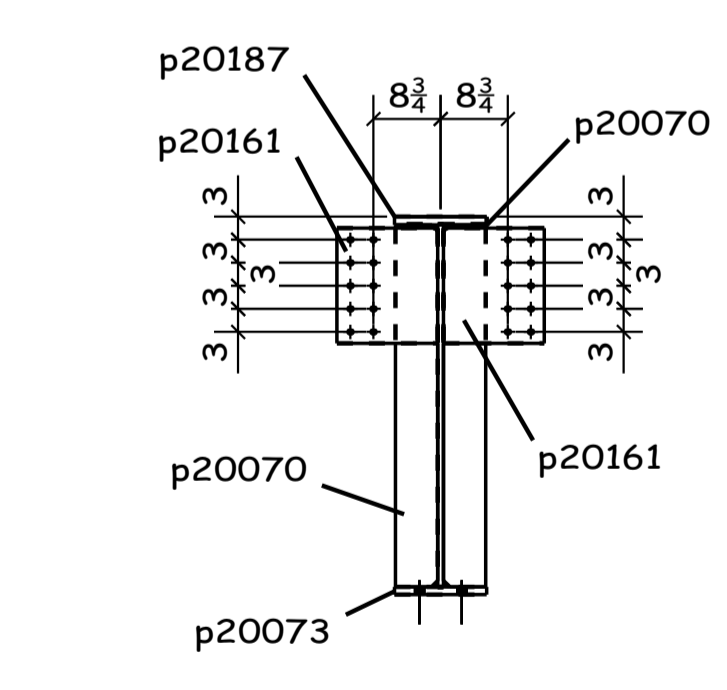
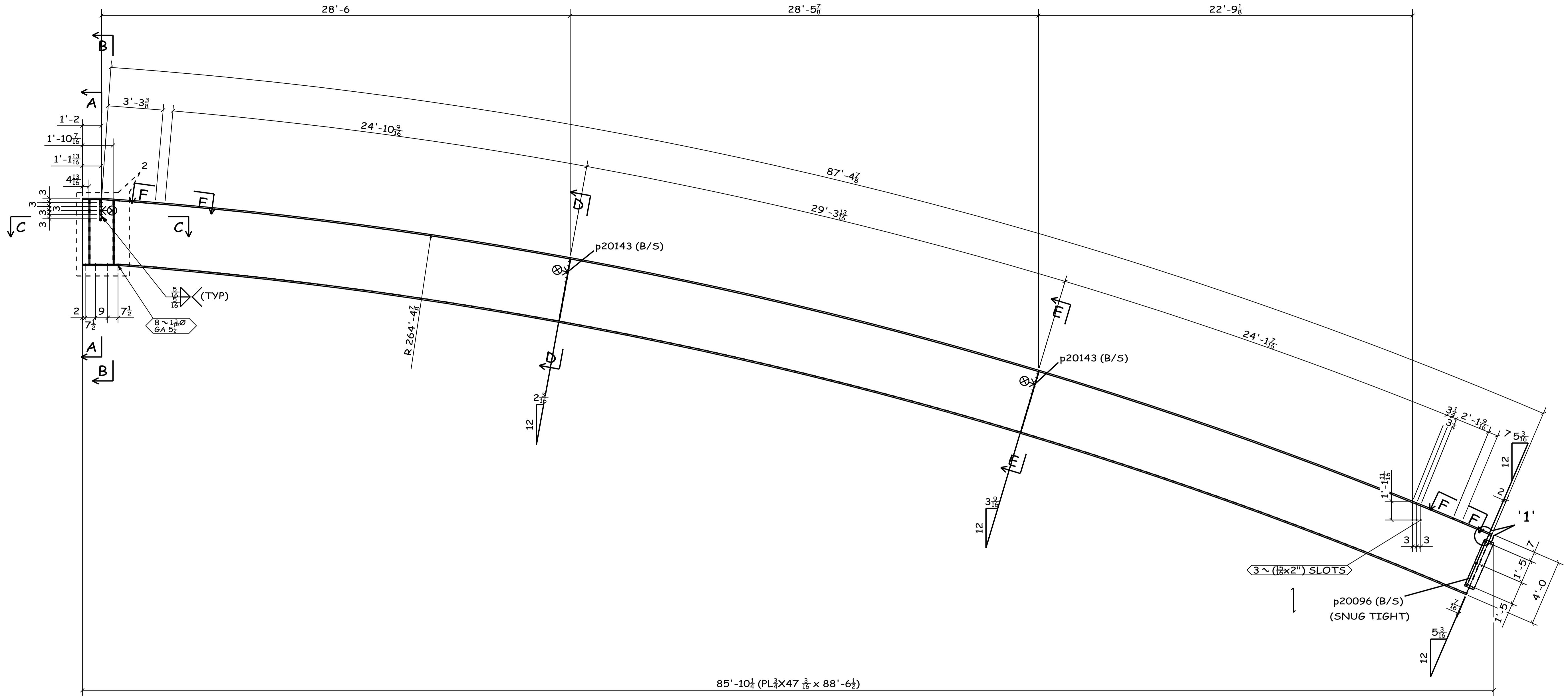
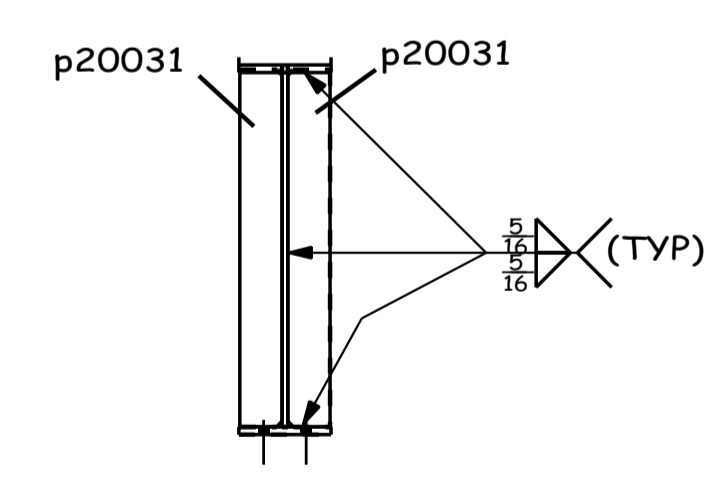


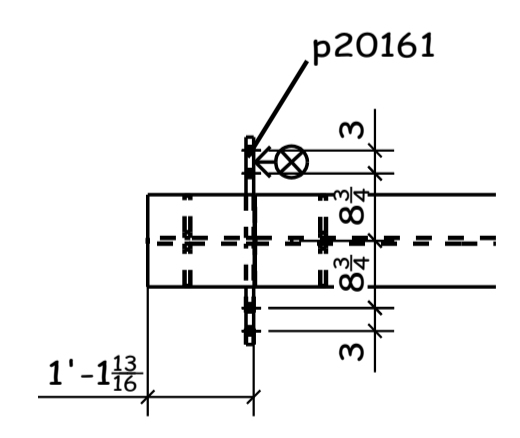
05/22/2006  
17:23:16  
FL3/4X47 3/16  
d 287 3/16"  
tw 3/4"  
bf  
tf



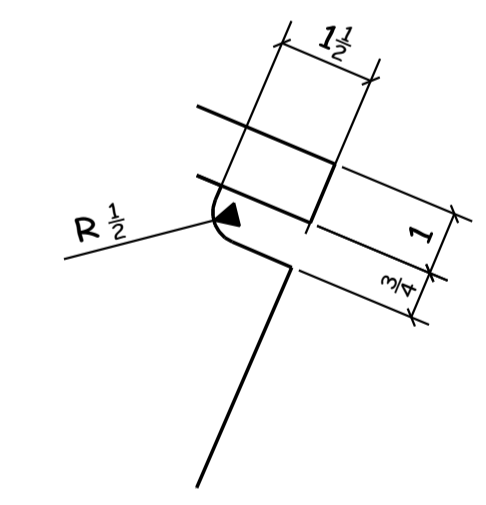
A - A



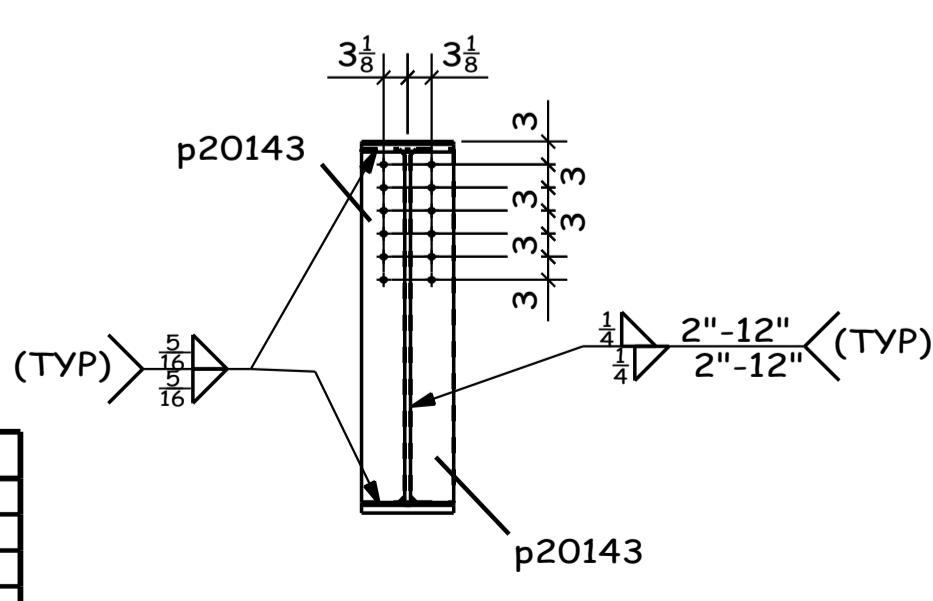
B - B



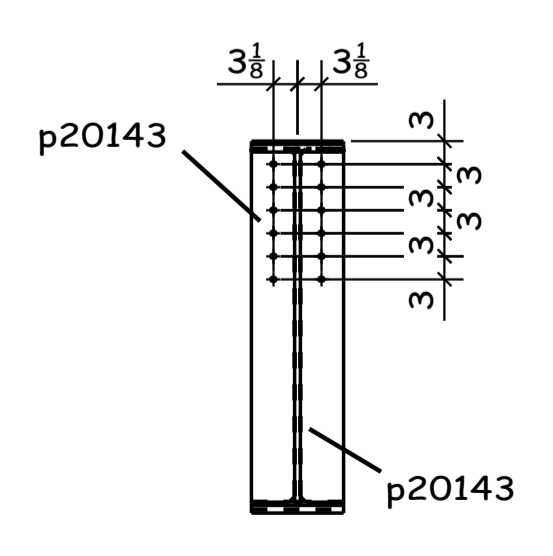
C - C



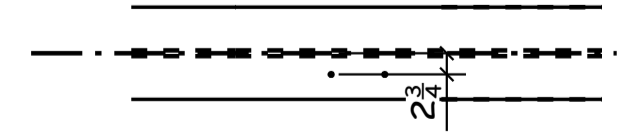
DETAIL-1



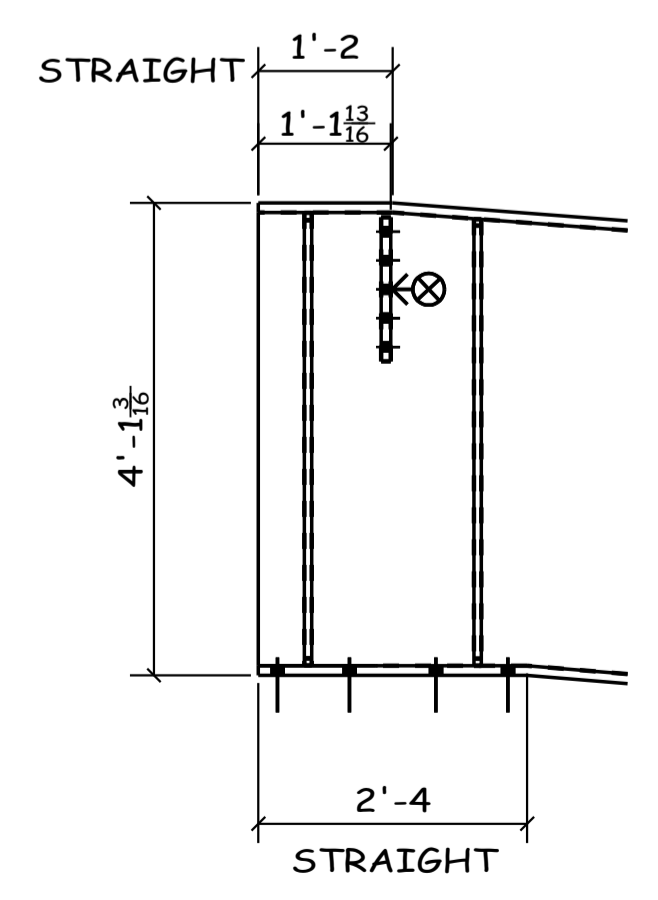
D - D



E - E



F - F



DETAIL 2

1 - GIRDER - 33PG

TOTAL QTY.	UNIT QTY.	MARK	DESCRIPTION	LENGTH	UNIT WT.	REMARKS	PGLN
1	1	33PG	GIRDER				
1	1	p20177	PL3/4X47 3/16	88'-6 1/2"	10281	A572-GR.50 Fy = 44 ksi	
2	2	p20031	PL3/4X5 1/2	3'-10 1/2"	108		
2	2	p20070	PL3/4X5 1/2	3'-11 1/8"	110		
1	1	p20073	PL1 X12	86'-11 3/4"	3551	A572-GR.50 Fy = 44 ksi	
2	2	p20096	PL3/8X7 1/4	3'-1"	57		
4	4	p20143	PL3/8X5 5/8	3'-10"	110		
2	2	p20161	PL1 X13 1/8	1'-3"	112		
1	1	p20187	PL1 X12	88'-6 7/8"	3617	A572-GR.50 Fy = 44 ksi	
3	3	BOLT	7/8" DIA A490N TC	2 3/4"			

SHIP	GRID LOC.	ELEV.	REF.	I.D. No.
11	4.2B-A	213'-5"		3519837

SHOP NOTES:  
 X = THE SIDE TO BE STRIPED  
 \* ALL COPES TO BE RADIUS \*

PROJECT			
UNIVERSITY OF MASSACHUSETTS AMHERST, MA CENTRAL HEATING PLANT-MAIN BUILDING			
HOLES	SHOP BOLTS	ELECTRODES	ALL MATL TO BE ASTM A36 (UN)
15/160	A325N_TC	E70XX (LH)	

UNITS	FIELD BOLTS	LENGTH
5	7/8" DIA A490N TC	BOLT 2 3/4"

REV	DATE	GENERAL REVISION	DATE	CHKD BY	DATE	CONTRACT NO.	SHT NO.
1	05/22/06	PP	04/24/2009	LN	04/06/06	1890	33PG

