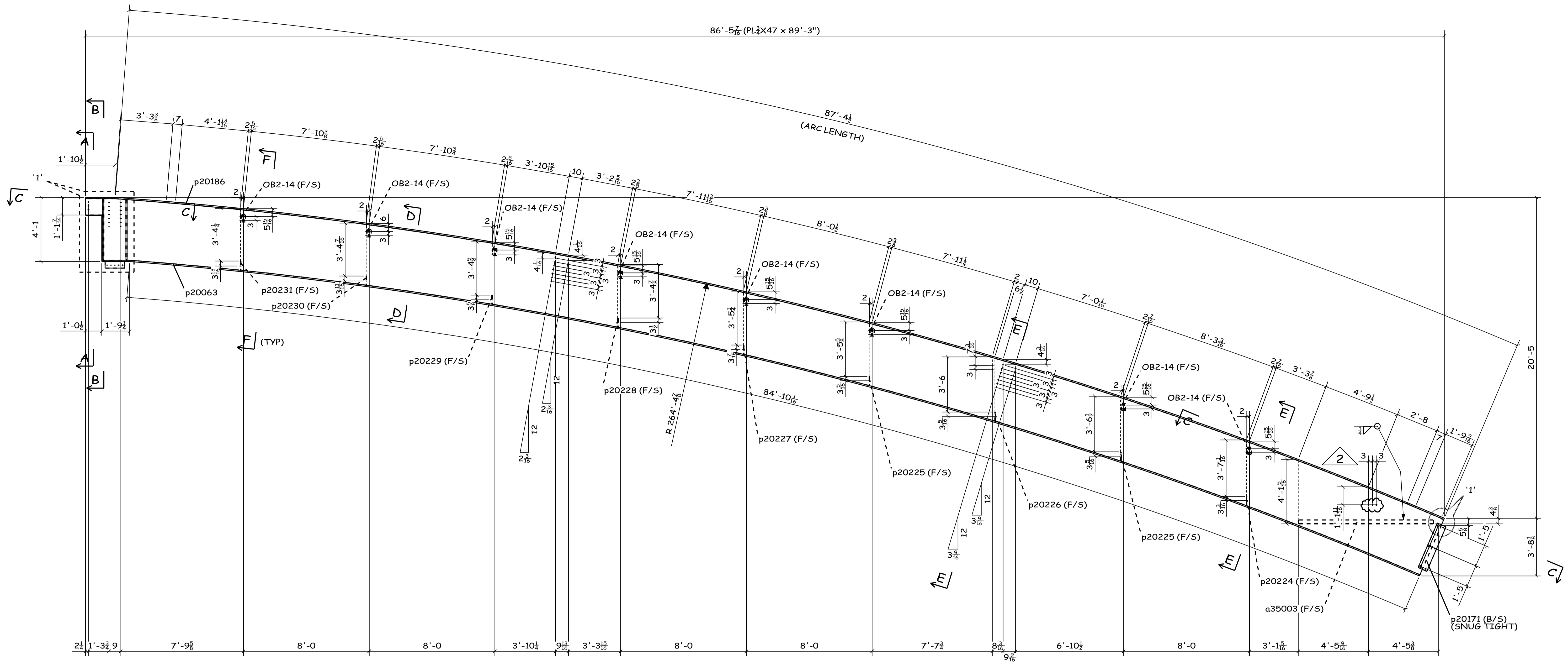


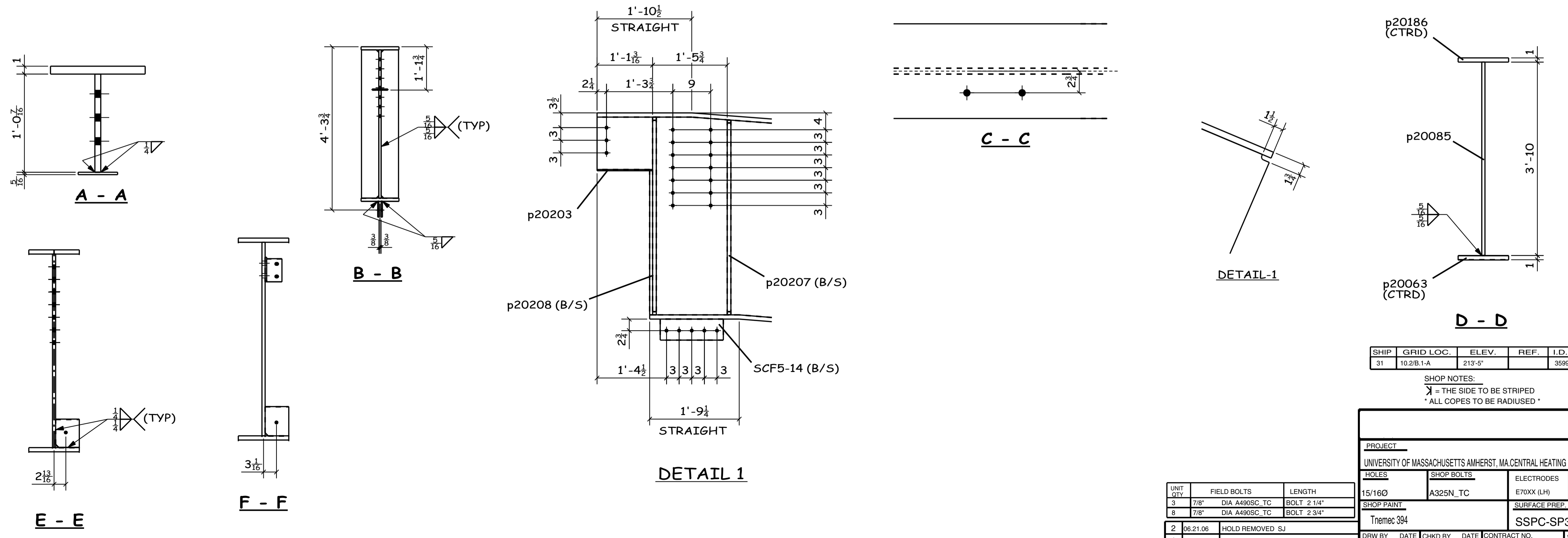
06/21/2006
15:25:03
PL3/4X47
d 287 3/16"
tw 3/4"
bf
tf

86'-5 7/16" (PL3/4X47 x 89'-3")



1 - GIRDER - 40PG

TOTAL QTY.	UNIT QTY.	MARK	DESCRIPTION	LENGTH	UNIT WT.	REMARKS	PGLN
1		40PG	GIRDER				
1	1	p20085	PL3/4X47	89'-3"	10276	A572-GR.50 Fy = 44 ksi	
8	8	OB2-14	L4X3-1/2X3/8	0'-5 1/2"	33		
2	2	SCF5-14	PL3/8X5	1'-3"	16		
1	1	a35003	L4X3X3/8	8'-7 1/8"	73		
1	1	p20063	PL1 X12	86'-7 3/4"	3538	A572-GR.50 Fy = 44 ksi	
2	2	p20171	PL3/8X7 1/4	3'-1"	57		
1	1	p20186	PL1 X12	89'-3 3/8"	3645	A572-GR.50 Fy = 44 ksi	
1	1	p20203	PL5/16X5	1'-1 1/8"	6	A572-GR.50 Fy = 44 ksi	
2	2	p20207	PL7/8X5 1/2	3'-10 1/4"	126		
2	2	p20208	PL7/8X5 1/2	3'-11"	128		
1	1	p20224	PL3/8X5 5/8	0'-7"	4		
2	2	p20225	PL3/8X5 5/8	0'-7"	8		
1	1	p20226	PL3/8X5 5/8	0'-7"	4		
1	1	p20227	PL3/8X5 5/8	0'-7"	4		
1	1	p20228	PL3/8X5 5/8	0'-7"	4		
1	1	p20229	PL3/8X5 5/8	0'-7"	4		
1	1	p20230	PL3/8X5 5/8	0'-7"	4		
1	1	p20231	PL3/8X5 5/8	0'-7"	4		
16	16	BOLT	7/8" DIA A490N TC	2 1/2"			
3	3	BOLT	7/8" DIA A490N TC	2 3/4"			



SHIP	GRID LOC.	ELEV.	REF.	I.D. No.
31	10.2B.1-A	213'-5"		3599339

SHIP NOTES:  
 X = THE SIDE TO BE STRIPED  
 \* ALL COPE TO BE RADIUSUED \*

PROJECT			
UNIVERSITY OF MASSACHUSETTS AMHERST, MA CENTRAL HEATING PLANT-MAIN BUILDING			
HOLES	SHOP BOLTS	ELECTRODES	ALL MATL TO
15/160	A325N_TC	E70XX (LH)	BE ASTM A36 (UN)
SHOP PAINT		SURFACE PREP	DRY
Tremec 394		SSPC-SP3	W/
2	06/21/06	HOLD REMOVED SJ	CONTRACT NO.
1	06/16/06	GENERAL REVISION SJ	1890
REV	DATE	REVISION	40PG
RP	04/06/2009	SJ 06.15.06	