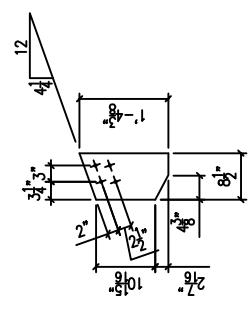
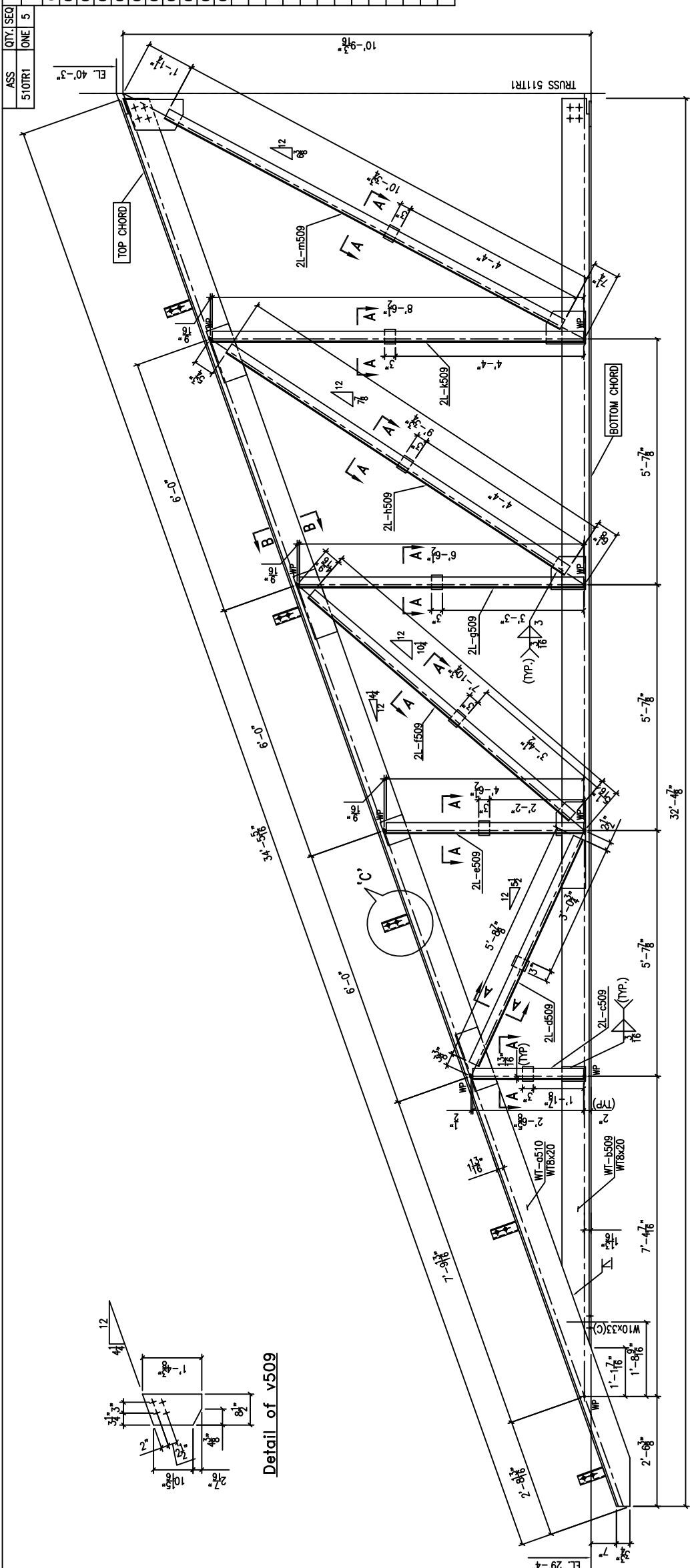


ASS QTY: SEQ
510TR1 ONE 5

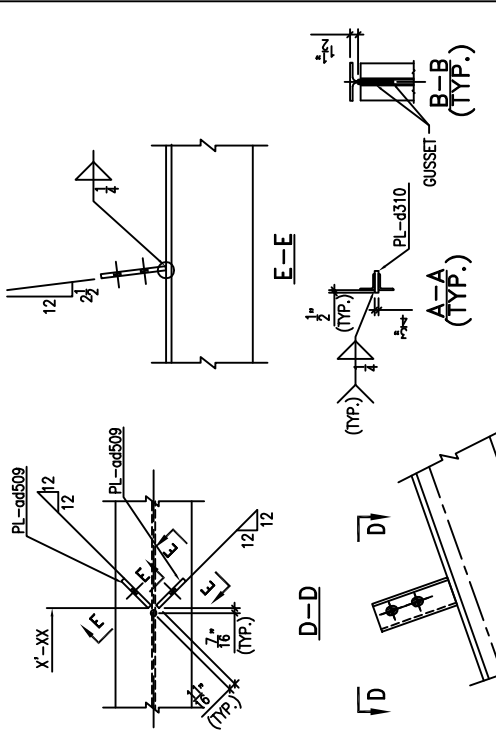
BILL OF MATERIAL				REMARKS	GRADE	A.B.M
QTY:	PIECE MARK	MINOR MARK	MATERIAL	LENGTH	WEIGHT UNIT	WEIGHT TOTAL
ONE	510TR1		TRUSS		1975	1975
ONE	a510		WT8x20	34'-5 5/16"	689	689
ONE	b510		WT8x20	28'-9 1/16"	575	575
ONE	c509		2L 3x3x1/4	2'-6 5/8"	25	25
ONE	d509		2L 3x3x1/4	5'-8 7/8"	56	56
ONE	e509		2L 3x3x1/4	4'-6 1/2"	45	45
ONE	f509		2L 3x3x1/4	7'-10 3/4"	77	77
ONE	g509		2L 3x3x1/4	6'-6 1/2"	64	64
ONE	h509		2L 3x3x1/4	9'-3 3/4"	91	91
ONE	k509		2L 3x3x1/4	8'-6 1/2"	84	84
ONE	m509		2L 3x3x1/4	10'-3 3/4"	101	101
2	n509		PL 1/4x6 1/2	1'-4 5/8"	8	15
2	p509		PL 1/4x6 1/2	0'-6 7/8"	3	6
2	s509		PL 1/4x6 1/2	1'-6 1/2"	9	17
2	t509		PL 1/4x6 1/2	1'-3"	7	14
2	v509		PL 1/4x8 1/2	1'-4 3/8"	10	20
2	w509		PL 1/4x4	0'-6 1/2"	2	4
2	aa509		PL 1/4x8 1/16	1'-11 7/8"	11	22
2	ab509		PL 1/4x9 1/8	0'-9 1/2"	6	12
2	ac509		PL 1/4x9	0'-10 7/8"	7	14
10	ad509		PL 3/8x3 1/2	0'-7 3/8"	3	28



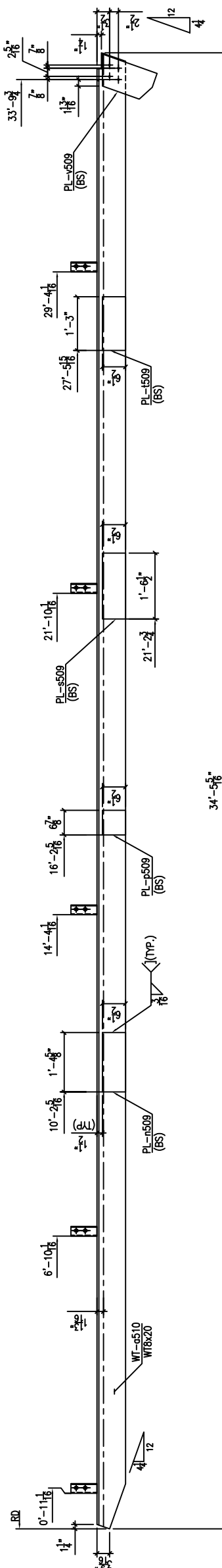
Detail of v509



ONE TRUSS - 510TR1

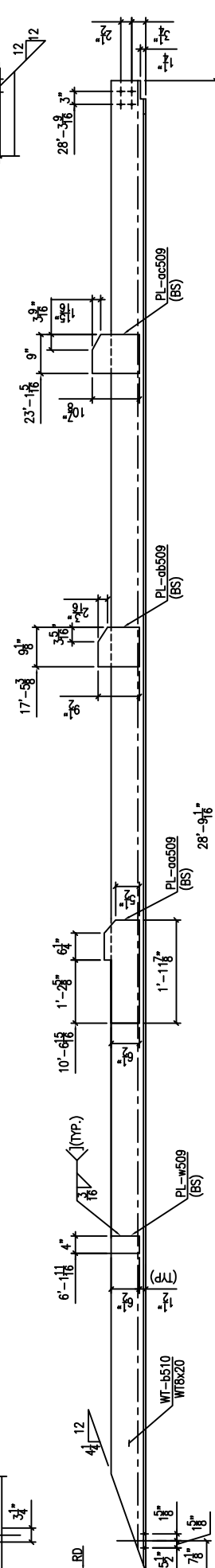


Detail of ab509



Detail of ac509

Detail of Top Chord (Sub Assembly)



Detail of Bottom Chord (Sub Assembly)

SHOP NOTES:
 1. ALL WELDING IS TO CONFORM TO AWS SPECIFICATIONS.
 2. ASSEMBLY MARK TO BE STAMPED ON TOP FACE, LEFT HAND END.
 3. ALL COPIES TO HAVE 1/2" RADIUS AT INTERNAL CORNERS U.O.N.
 4. ALL BOLTS U.N. TO BE A325N

PROJECT: THE OLD GUARD VEHICLE MAINTENANCE FACILITY
 ITEM: TRUSS DETAILS (510TR1)
 CUSTOMER: JOHN C. GRIMBERG CO. INC.
 ARCHITECT: THE LUKEMIRE PARTNERSHIP INC.
 ENGINEER: US ARMY CORP. OF ENGINEERS
 SURF.PREP. FINISH: STANDARD SHOP PRIMER
 HOLES: 13/16" U.O.N. DRN. BY JA DATE 10.07.2004
 MATERIAL U.N. ASTM A992-GR.50 U.N. JOB NO. 24019
 WELDING U.N. E70XX DWG. 510

REV #	DATE	BY	REVISION
0	-	-	-